

Dare to LEAD:

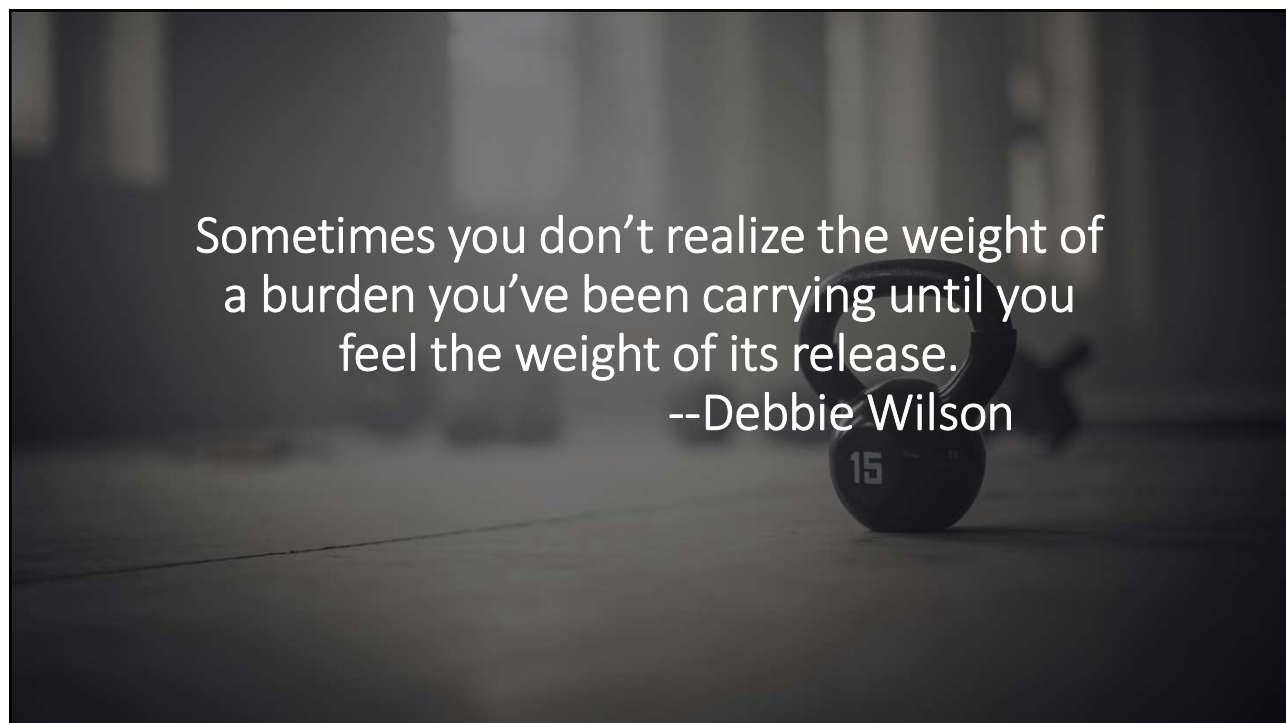
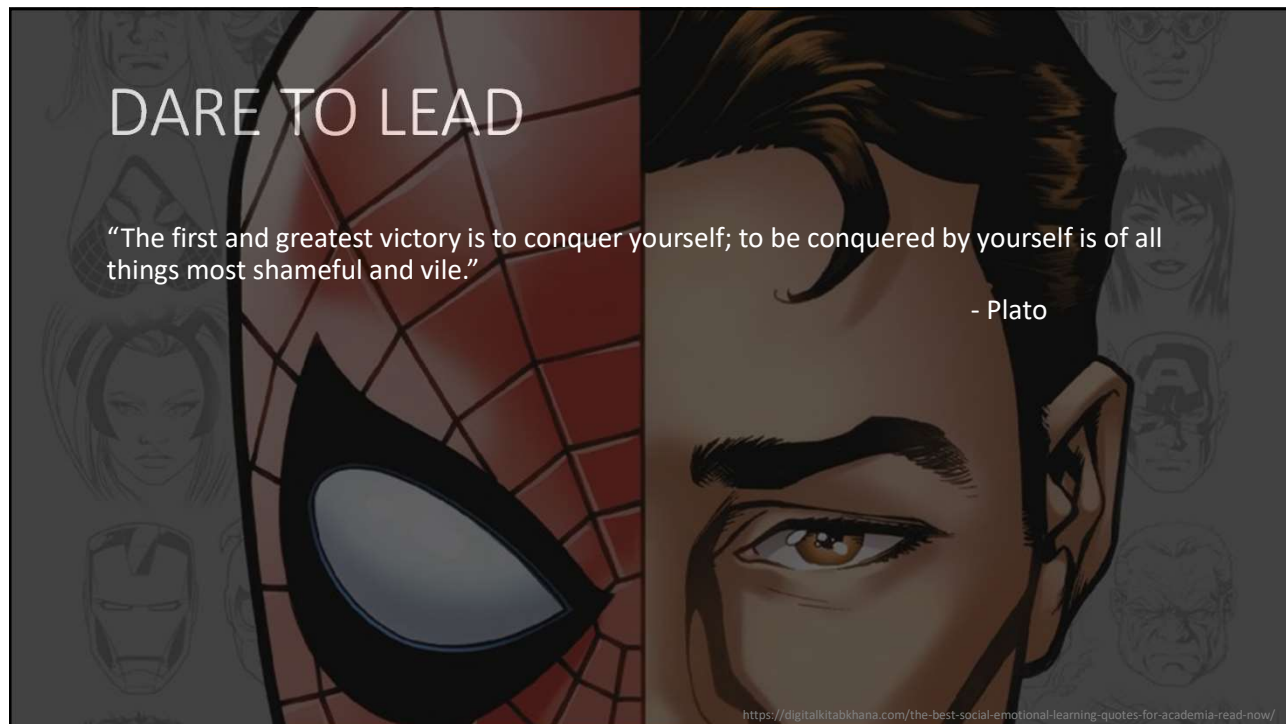
Embracing the Leader in all of us!

Dr. Kevin Dyson
Principal
Williamson County Schools, TN

AGENDA



- What are you holding on to?
- Becoming who we are meant to be
- What's your next move?
- When the work is done
- Dare to LEAD





Adolescent Mental Health and Schools

- Globally, one in seven 10-19-year-olds experiences mental health conditions, yet these remain largely unrecognized and untreated.
- Depression, anxiety and behavioral disorders are among the leading causes of illness and disability among adolescents.
- Suicide is the fourth leading cause of death among 15-19-year-olds.
- Since Columbine there has been a total of 118 active shooter incidents in K-12 schools in the U.S.
- Nearly 60% of active shooter incidents have occurred in High Schools.
- 90% of teens ages 13-17 have used social media.
- 75% report having at least one active social media profile.
- 51% report visiting a social media site at least daily.
- Estimated that nearly two-thirds of teens have their own mobile devices with internet capabilities.
- On average, teens are online almost nine hours a day, not including time for homework.

World Health Organization, Nov. 2021

https://www.aacap.org/AACAP/Families_and_Youth/Facts_for_Families/FFF-Guide/Social-Media-and-Teens-100.aspx

A Timeline of School Shootings Since Columbine; Vigderman, A & Turner, G; August 25, 2022

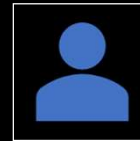
Suburban High School....More than just educators...



Restorative School - The goal of restorative practices is to **develop community** and to **manage conflict** and tensions by **repairing harm** and **restoring relationships**.



Trauma Informed School - Trauma-informed approaches in schools utilize a Multi-Tiered System of Supports (MTSS) in which whole school tiered practices and interventions utilize systems, data and evidence-based practices to increase social, emotional, and academic success for all students. (176 TN Schools)

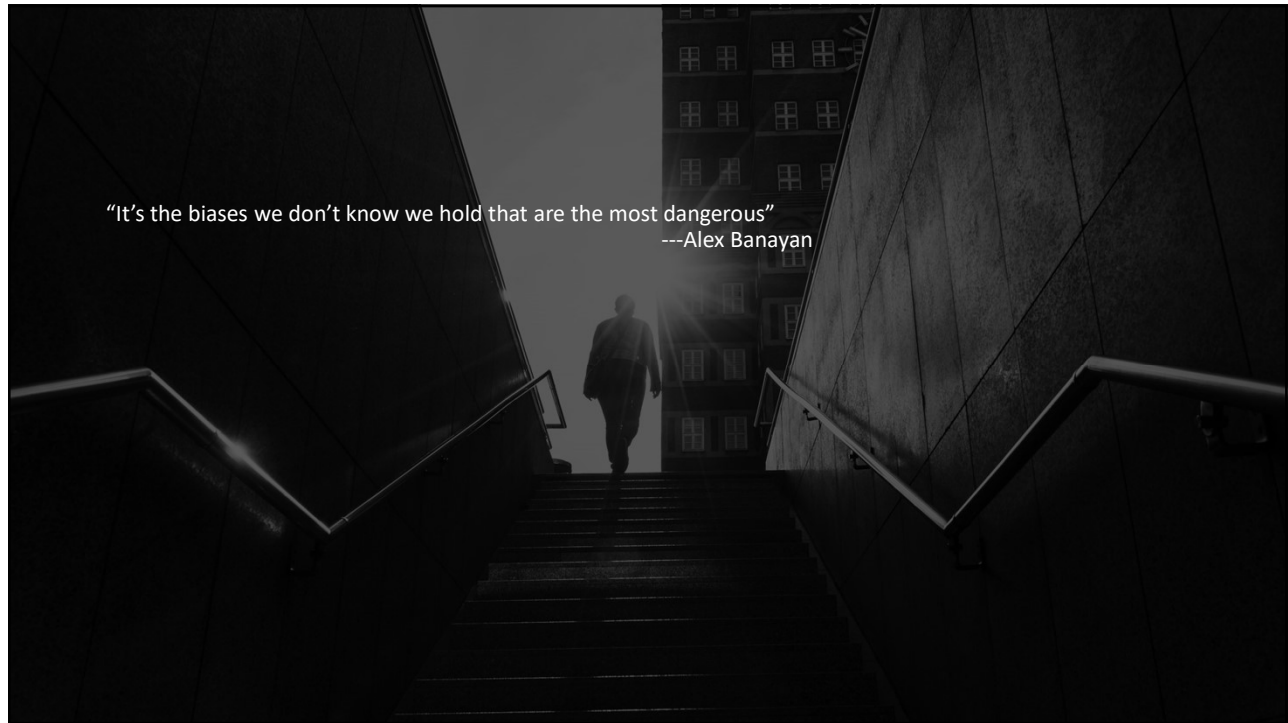


SEL school district - SEL is the process of applying the knowledge, skills, and attitudes to develop healthy identities, manage emotions and achieve personal and collective goals, feel and show empathy for others, establish and maintain supportive relationships, and make responsible and caring decisions.

Supports....

- Behavior Analyst
- RTI2B Interventionist (Instruction)
- RTI2B Interventionist (Restorative)
- MTSS Interventionist
- RTI- A Interventionist
- Social Worker
- Restorative Counselor
- Family Involvement Specialist
- STARS Counselors - Student Assistance Program (SAP)
- STARS Counselor - Enhanced Student Assistance Program (ESAP)

LEAD
What are you holding on
to?



"It's the biases we don't know we hold that are the most dangerous"
---Alex Banayan

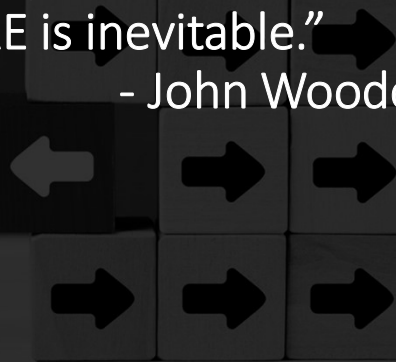


Continuous Improvement Is Better Than
Delayed Perfection.
--Mark Twain

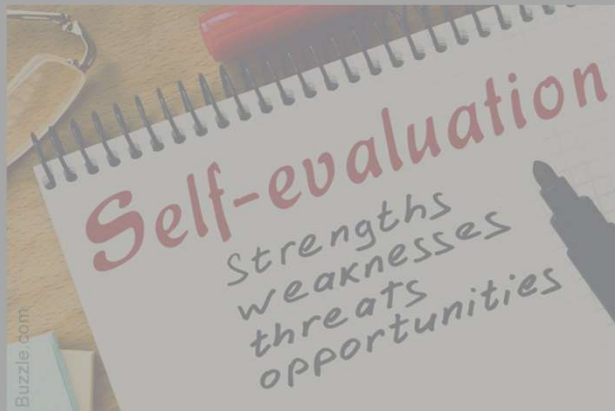
LEAD

Are you becoming the
person you are destined
to become?

“Without proper self-evaluation,
FAILURE is inevitable.”
- John Wooden



Know Thy Self!



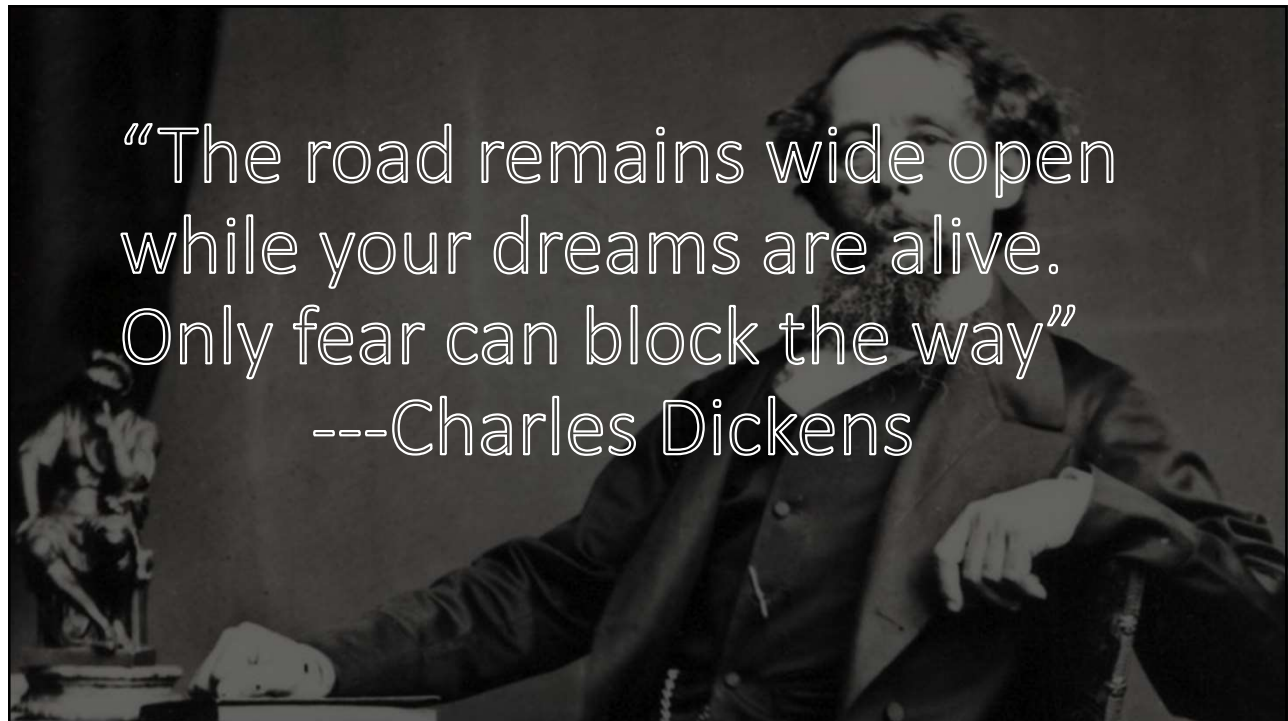
<https://asana.com/resources/self-evaluation-template>



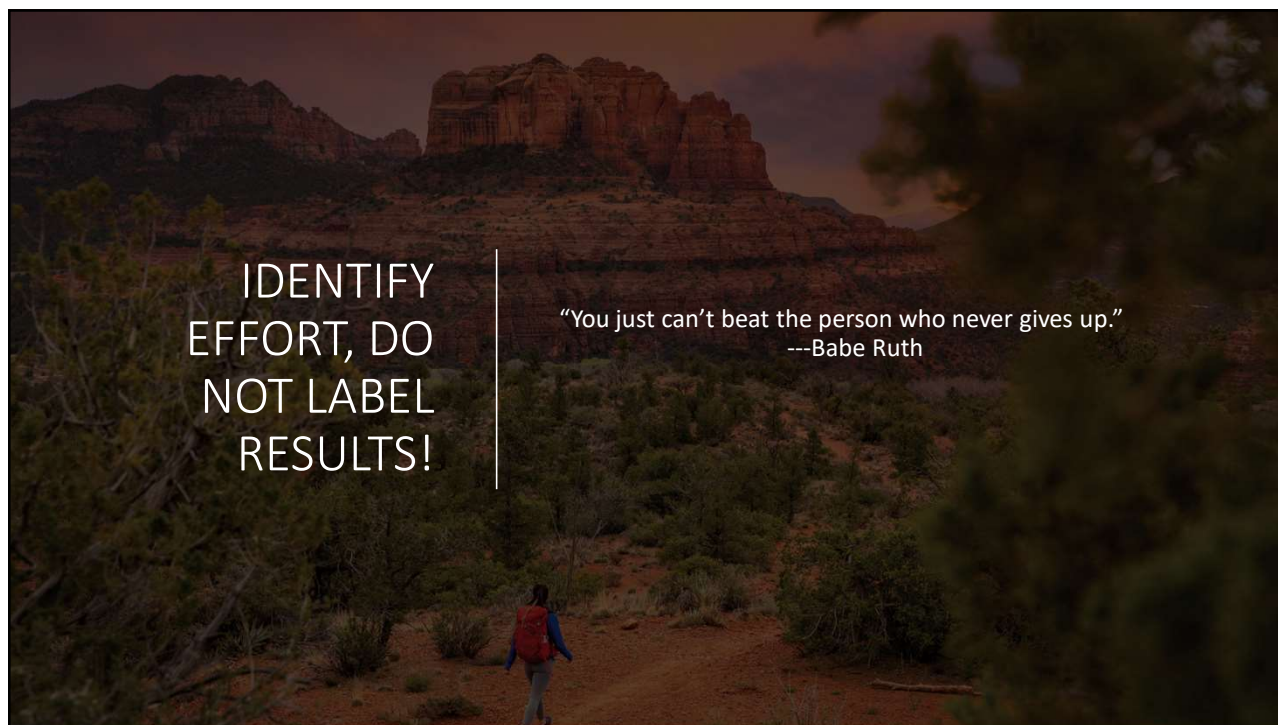
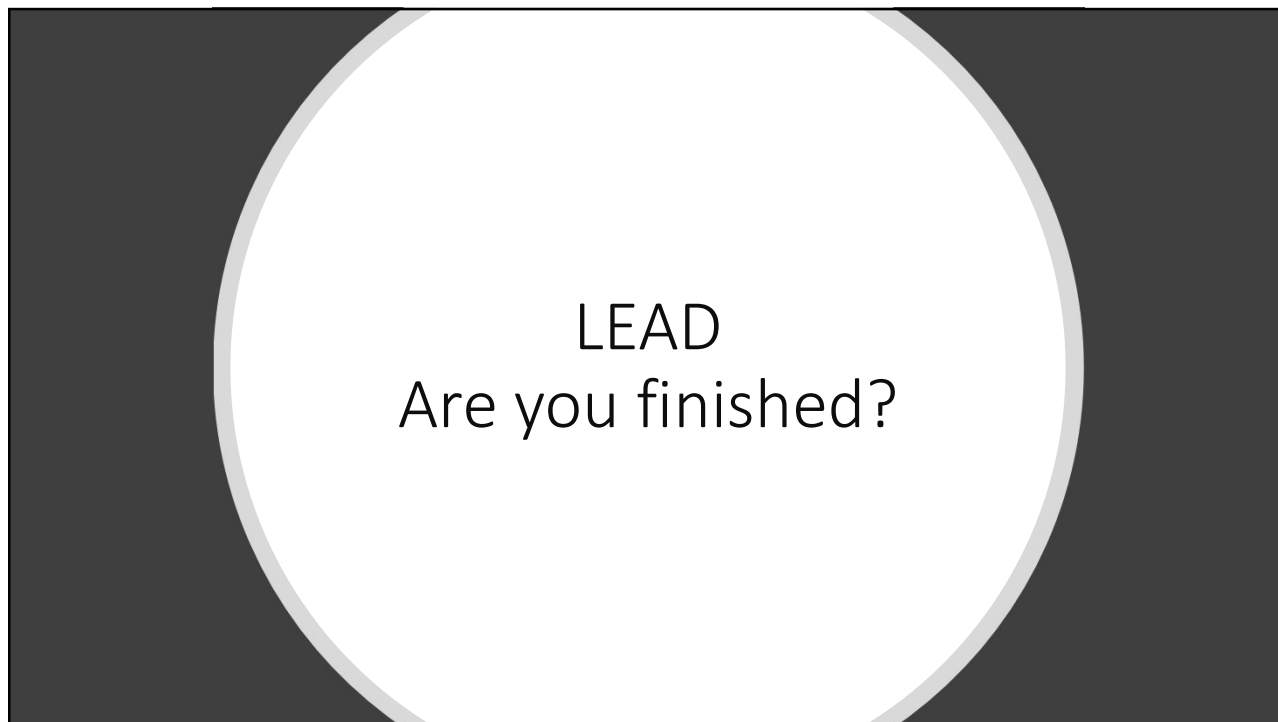
LEAD
What's your next move?



“Great things in business are never done by one person. They’re done by a team of people”
---Steve Jobs



“The road remains wide open while your dreams are alive. Only fear can block the way”
---Charles Dickens





EVALUATE

LET GO!

ADAPTABLE

DELIVER

Dare to LEAD!

THANK YOU

Dr. Kevin Dyson

Williamson County Schools, TN

Follow me on :



@ktdyson87

